

Scottsdale Golf Trip Guide

Local favorites, course profiles and the local knowledge you need to plan a trip worth remembering.

INSIDE THIS GUIDE

What's in here.

A self-serve planning doc for anyone thinking about a Scottsdale golf trip. Skim it, bookmark it, send it around to the group.

START HERE

About & How We Work	03
The Course Map	04
A Golf Destination	05

FEATURED COURSES

We-Ko-Pa Saguaro	06
Quintero	07
Troon North Pinnacle	08
We-Ko-Pa Cholla	09
Grayhawk Raptor	10
TPC Scottsdale Stadium	11
Ak-Chin Southern Dunes	12
Phoenician	13
Camelback Ambiente	14
Boulders	15
Gold Canyon Dinosaur Mountain	16
Talking Stick O'odham	17
Verrado Founders	18
Papago	19
Grass Clippings	20

COURSE DIRECTORY

16 Additional Courses	21-28
-----------------------------	-------

PACKAGE SPECIALS

Featured Package Specials	29-30
---------------------------------	-------

LODGING

Private Homes	31-32
Resort Partners	33

FOR YOUR TRIP

Corporate Retreats	34
Dining & Drinks	35-36
Things to Do	37-38
Getting Here & Best Time to Visit	39-40

BOOK YOUR TRIP

How to Book	41
-------------------	----

ABOUT GOLFSCOTTSDALEARIZONA

Your trip deserves more than a call center

We are a boutique golf travel concierge based in Scottsdale, specializing in custom group trips for buddies trips, bachelor parties, and corporate outings. Groups of four to sixty players come to us because they want their trip built by locals who actually live here, not by a call center that sells the same package to every caller.

What sets us apart is simple: we live here and we play here. We know when Scottsdale courses overseed and when Gold Canyon is at its best. We know which resort pools your non-golfers will actually want to sit by, which steakhouse takes groups of sixteen without making you call a week ahead, and which side of Sky Harbor to land at if you want to be on the first tee by 10am.

That local knowledge is the difference between a trip that works and one that doesn't. Whatever your group size, budget, or trip style, we can build it.

HOW WE WORK

From First Message to First Tee Shot

Four steps. No guesswork. No booking fees.

<p>1</p> <p>TELL US ABOUT YOUR GROUP</p> <p>Share your dates, group size, and the kind of trip you want. Four players or fifty. Weekend quickie or ten days across nine courses. A phone call, a DM, or a form works, and we respond the same day.</p>	<p>2</p> <p>WE BUILD YOUR ITINERARY</p> <p>You get a proposal with course pairings, lodging options, and total trip cost. Pre-built package if it fits, custom from scratch if it doesn't. Either way, you get preferred tee times and access earned from years of relationships.</p>	<p>3</p> <p>LOCK IT IN WITH 10%</p> <p>A 10% deposit holds everything. Final balance due thirty days out. We handle individualized billing, so if one player is arriving late or skipping a round, everyone pays for their own portion. No Venmo chains.</p>	<p>4</p> <p>SHOW UP AND PLAY</p> <p>Your confirmed itinerary hits your inbox, and you are all set. We handle check-ins with the courses and the property. If something shifts, we handle the re-routing while you stay on the range.</p>
--	---	--	--

WHAT GROUPS ARE SAYING

★★★★★ 5.0 Rating on Google Reviews

ACCREDITED MEMBER



★★★★★

"I literally dropped my dates and they handled every detail. No hassle, no back-and-forth, no worries. Just pure golf vibes. Already locked in to book again."

SHIKYAME

★★★★★

"Set me up with some beautiful courses and packages on my trip. The whole process was very easy and flexible, and we would not have had the experience we had without him."

HARRISON

★★★★★

"Fair pricing for the rounds, with all the hassle of booking and management completely handled. Payment was simple. Would absolutely recommend to anyone traveling with a group."

JAMES

HOW TO FLY IN

Three airports, one right answer for most groups

Phoenix has the most connected airport in the Southwest, a budget-friendly secondary, and a private-jet option most travelers don't know exists.

PHX Phoenix Sky Harbor International

20 MIN TO OLD TOWN SCOTTSDALE

RECOMMENDED

NONSTOP DESTINATIONS

158

Domestic + international

MAJOR CARRIERS

All of them

AA, UA, DL, SW, AS, and more

DRIVE TO SCOTTSDALE

20–30 min

Uber \$35–50 to Old Town

Fly here by default. PHX is one of the best-connected airports in the Southwest, with nonstops from nearly every major US market and a growing international roster. Terminal 4 is modern, food and drink options are solid, and rideshare pickup is efficient.

Group travel tip: Terminals 3 and 4 are connected by Sky Train, so split-arrival groups can easily consolidate pre-Uber. For groups of eight or more, we coordinate a private transfer from baggage claim directly to the property, so nobody is standing around on a curb.

AZA Phoenix-Mesa Gateway

35 MIN TO OLD TOWN SCOTTSDALE

NONSTOP DESTINATIONS

43

Primarily domestic

MAIN CARRIERS

Allegiant · Sun Country

Budget-friendly routing

DRIVE TO SCOTTSDALE

35–45 min

Uber \$55–75 to Old Town

The budget play. Gateway is in the East Valley, about 35 miles from Old Town Scottsdale. For groups flying in from mid-size markets on Allegiant or Sun Country, the fare savings often beat the slightly longer drive.

Works best for groups staying at East Valley properties like Gold Canyon or Talking Stick — the drive becomes trivial. For groups staying in North Scottsdale or the Boulders area, PHX is almost always the better call once you factor in the transfer.

SCF Scottsdale Airport

5 MIN TO NORTH SCOTTSDALE LODGING

NONSTOP DESTINATIONS

9

Via JSX semi-private

OPERATOR

JSX Air

Semi-private hop flights

DRIVE TO SCOTTSDALE

5–15 min

In North Scottsdale already

The underrated option. SCF is a general-aviation airport in North Scottsdale that most travelers don't realize is commercially operated by JSX. JSX runs semi-private hop flights from nine markets including Dallas, LA, Burbank, and Las Vegas.

No TSA lines, no middle seats, 30-pound free bag allowance, and a terminal that feels more private-jet than commercial. If you're flying from a JSX-served market and the fare makes sense, this is the best way to arrive in Scottsdale. You'll be at your lodging fifteen minutes after landing.

ONCE YOU LAND

Three ways to get around once you're here



RECOMMENDED FOR GROUPS

Private Transfers

GROUPS OF 8+

We coordinate sprinter vans and executive SUVs for groups. Round-trip airport, daily course transfers, and the late-night logistics problem disappears. Ak-Chin, Gold Canyon, and Quintero are off the beaten path — rideshare wait times can run 30–60+ minutes out there. Pre-arranged is the move.

Uber / Lyft

THE DEFAULT FOR MOST GROUPS

Plentiful and fast in Scottsdale. \$35–50 from PHX to Old Town, \$50–70 to North Scottsdale. Works well for small groups and daily runs between course and lodging.

Rental Car

WHEN YOU WANT INDEPENDENCE

All major carriers at PHX. Worth it if your group splits up or you are playing courses 45+ minutes apart. Pick up curbside at Terminal 3 or 4.

ARIZONA DUI LAW

- Arizona has zero tolerance for impaired driving. If you've had a couple drinks and blow a 0.04, an officer can take you downtown. Pre-arrange your group's evening transportation.

BEST TIME TO VISIT

When Scottsdale golf is actually at its best

Peak Season

OCT – MAY

Highs 65–88° · Lows 42–64°

Best weather in the country. Courses are full, rates reflect it. Book tee times 60–90 days out for the best windows. Morning slots (7–9am) go first.

Summer Value

JUN – SEP

Highs 99–107° · Lows 76–84°

Best rates of the year by a wide margin. Courses are empty. Beat the heat with early morning rounds (6–7am) or twilight after 5pm. Serious golfers know this market.

Events Season

JAN – FEB

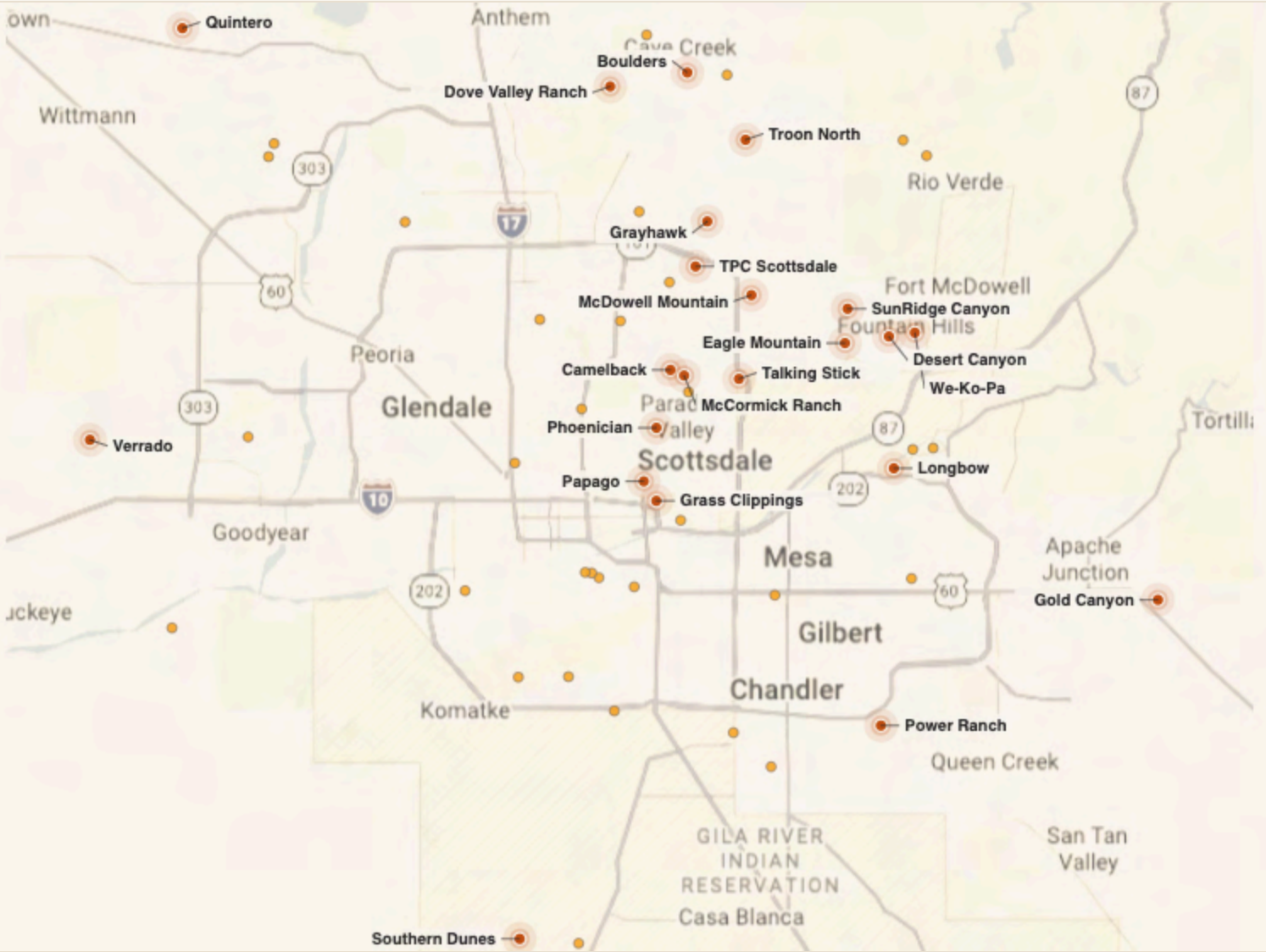
Highs 67–72° · Lows 44–48°

Waste Management Phoenix Open runs late January into early February (TPC Stadium Course). Spring Training starts late February. Book lodging early if your dates overlap.

WHAT TO EXPECT, MONTH BY MONTH

MONTH	HIGH / LOW	SUNRISE	SUNSET	RAIN
January	67 / 44°F	7:33am	5:40pm	4
February	72 / 48°F	7:10am	6:06pm	4
March	80 / 54°F	6:32am	6:29pm	4
April	88 / 61°F	5:48am	6:51pm	2
May	97 / 70°F	5:20am	7:13pm	1
June	107 / 79°F	5:13am	7:29pm	2

MONTH	HIGH / LOW	SUNRISE	SUNSET	RAIN
July	106 / 84°F	5:25am	7:21pm	5
August	104 / 83°F	5:51am	6:54pm	5
September	99 / 76°F	6:14am	6:12pm	3
October	88 / 64°F	6:37am	5:33pm	3
November	75 / 51°F	7:02am	5:12pm	2
December	67 / 44°F	7:26am	5:07pm	3



COURSES BY REGION

Where each course sits in the Valley

<p>North Scottsdale DESERT HIGHLANDS</p>	<p>Boulders · Dove Valley Ranch · Grayhawk Raptor · Grayhawk Talon · McDowell Mountain · TPC Scottsdale Champions · TPC Scottsdale Stadium · Troon North Monument · Troon North Pinnacle</p>
<p>Fountain Hills FORT MCDOWELL</p>	<p>Desert Canyon · Eagle Mountain · SunRidge Canyon · We-Ko-Pa Cholla · We-Ko-Pa Saguaro</p>
<p>Scottsdale CENTRAL · OLD TOWN</p>	<p>Camelback Ambiente · Camelback Padre · McCormick Ranch Palm · McCormick Ranch Pine · Phoenician · Talking Stick O'odham · Talking Stick Piipaash</p>
<p>East Valley MESA · GILBERT · GOLD CANYON</p>	<p>Gold Canyon Dinosaur Mountain · Gold Canyon Sidewinder · Longbow · Power Ranch</p>
<p>Tempe / Phoenix CENTRAL VALLEY</p>	<p>Grass Clippings · Papago</p>
<p>South Phoenix MARICOPA</p>	<p>Ak-Chin Southern Dunes</p>
<p>West Valley VERRADO · BUCKEYE</p>	<p>Quintero · Verrado Founders · Verrado Victory</p>

THE VALLEY

200+ courses. One of the best golf cities in the country.

Scottsdale and the greater Phoenix Valley hold more quality golf per square mile than just about anywhere in the U.S. Top-100 layouts, desert design icons, championship venues, and hidden locals' favorites — all within an hour of each other.

The courses plotted on the opposite page are the ones featured in this guide. We can coordinate tee times at any course in the Valley, so if you have a course in mind that isn't on this map, just reach out. Our team is happy to plan your trip or answer questions on any course in the area.

MAP LEGEND

**Featured in this guide**

Courses we build most group trips around

**Other Valley courses**

A sample of the 200+ courses across the metro

Have a specific course in mind? *Our booking team works with nearly every public and resort course in the Valley. If it's not on the map, just ask.*



Course Directory

FORT MCDOWELL, ARIZONA

We-Ko-Pa | Saguaro

A walker's course by Coore & Crenshaw, and the one we book the most

Photo: @BrianOar

Saguaro sits quietly among the top public courses in America. Bill Coore and Ben Crenshaw routed it across the open Sonoran floor with almost no earth moved, so the holes feel discovered rather than built. Wide fairways, firm turf, and thoughtful green complexes reward players who can shape a shot and think ahead.

No houses, no cart paths cutting through the view, and nothing between you and the McDowells. Pair it with Cholla for a 36-hole day that lets you see two genuinely different philosophies of desert golf on one property.

COURSE DESIGNER

Coore & Crenshaw

Opened 2006

PAR · STYLE

71 · Links-style desert

Walkable, minimal earth moved

BEST FOR

Thinking players

Ball-strikers and purists

GREEN FEE ●●●●○

SCORECARD · TEES, YARDAGE, SLOPE & RATING

TEE	YARDAGE	SLOPE	RATING
● SAGUARO	6,966	137	72.0
● PURPLE	6,603	132	70.2
○ WHITE	6,252	125	68.8
● COMPOSITE	5,786	120	66.9

LOCAL KNOWLEDGE

If playing 36, start with Cholla and finish on Saguaro for sunset. Grab a transfusion at the halfway house and keep an eye out for wildlife.

PEORIA, ARIZONA

Quintero

A Rees Jones bucket-list round tucked into the Hieroglyphic Mountains

Photo: @BrianOar

Quintero sits thirty miles northwest of Scottsdale, tucked into the Hieroglyphic Mountains where almost no one builds anything. Rees Jones used the elevation and the remoteness as the design. Tee shots drop two hundred feet. Par threes run downhill into bowls framed by peaks.

A multi-million dollar renovation recently wrapped, with all new greens and rebuilt bunkers throughout, and the course is playing as good as ever. If your players want a bucket-list round that nobody in their foursome has seen a hundred times on Instagram, this is where we send them.

COURSE DESIGNER

Rees Jones

ASGCA · Opened 2000

PAR · STYLE

72 · Mountain desert

Elevated tees, dramatic drops

BEST FOR

Low handicaps

Signature round, scenic day

GREEN FEE ●●●●

SCORECARD · TEES, YARDAGE, SLOPE & RATING

TEE	YARDAGE	SLOPE	RATING
● BLACK	7,249	148	75.3
● GOLD	6,875	143	73.1
● SILVER	6,437	137	70.7
● COPPER	5,807	127	68.4

LOCAL KNOWLEDGE

Be nice to the ranger and keep pace of play honest. Fresh cookies get delivered mid-round, and the first tee is a 10-minute shuttle from the pro shop.

SCOTTSDALE, ARIZONA

Troon North | Pinnacle

Weiskopf's second act at the club that made Scottsdale a golf destination

Photo: @BrianOar

Troon North is the brand that put Scottsdale golf on the national map, and Pinnacle is the course that took it there. Tom Weiskopf carved it through the Sonoran Desert in North Scottsdale, letting granite boulders, towering saguaros, and natural arroyos dictate the routing. The result is a championship layout that rewards strategy off the tee and punishes anything loose.

If a group is only doing one round at Troon North, we often point them to Pinnacle over Monument. Bigger elevation changes, better sightlines, and a finishing stretch that will decide the day's bets.

COURSE DESIGNER

Tom Weiskopf

Opened 1995

PAR · STYLE

71 · High desert

Boulders, saguaros, arroyos

BEST FOR

First-time visitors

The Scottsdale bucket round

GREEN FEE ●●●●

SCORECARD · TEES, YARDAGE, SLOPE & RATING

TEE	YARDAGE	SLOPE	RATING
● BLACK	7,009	140	73.2
● GOLD	6,635	131	71.8
● SILVER	6,248	131	69.8
● COPPER	5,764	126	68.1

LOCAL KNOWLEDGE

Dynamite Grill is a great post-round option. Ask for a forecaddie if available, and bring more balls than you think you need.



FORT MCDOWELL, ARIZONA

We-Ko-Pa | Cholla

The desert-target original on the property, perched above the Sonoran

Photo: @BrianOar

The course that put We-Ko-Pa on the map before Saguaro arrived. Scott Miller routed Cholla through the uplands of the Fort McDowell Yavapai Nation, where elevation changes, granite outcrops, and unobstructed views of Four Peaks and the McDowell Mountains define the round. More traditional target golf than Saguaro, with forced carries and tighter corridors that demand strategy off the tee.

Pair Cholla with Saguaro for a 36-hole day that shows two distinct philosophies of desert design on the same property. Cholla's the visually bigger round; Saguaro's the purer test. Most groups play Cholla first.

COURSE DESIGNER

Scott Miller

Opened 2001

PAR · STYLE

72 · Target desert

Elevation, views, variety

BEST FOR

Scenic-first rounds

Best views on the property

GREEN FEE ●●●●○

SCORECARD · TEES, YARDAGE, SLOPE & RATING

TEE	YARDAGE	SLOPE	RATING
● BLACK	7,225	136	73.9
● BLUE	6,766	131	71.8
○ WHITE	6,350	127	69.7
● GOLD	5,959	123	67.9

LOCAL KNOWLEDGE

Morning tee times get the best temperatures and the sharpest shadows on the rock formations. The back tees are no joke at 7,225 yards.

SCOTTSDALE, ARIZONA

Grayhawk | Raptor

Fazio's championship test and a regular NCAA host

The Raptor is Grayhawk's championship layout and one of the most-tested public courses in the Valley. Tom Fazio built it to host serious golf, and it's delivered — the NCAA Men's and Women's Championships return here year after year. Tight landing areas, demanding approach shots, and greens that punish the slightest miscalculation.

Everything about Grayhawk operates at a five-star level: the practice facilities, the service, the conditioning. For groups that want the "best of the best" Scottsdale experience, the Raptor is as good as it gets.

COURSE DESIGNER

Tom Fazio

Opened 1995

PAR · STYLE

72 · Championship desert

Home of NCAA Championships

BEST FOR

Serious players

Five-star everything

GREEN FEE ●●●●

SCORECARD · TEES, YARDAGE, SLOPE & RATING

TEE	YARDAGE	SLOPE	RATING
● RAPTOR	7,135	142	74.3
● TALON	6,643	135	71.9
● HAWK	6,157	129	69.7
● EAGLE	5,540	121	67.0

LOCAL KNOWLEDGE

Phil's Grill at the clubhouse is named for Phil Mickelson and worth staying for. Get to the range early; this course finds weaknesses.



SCOTTSDALE, ARIZONA

TPC Scottsdale | Stadium

The loudest tee shot in golf and the only course you've definitely seen on TV

Photo: @BrianOar

The stage for the WM Phoenix Open and the famous 16th hole, where 200,000 fans pack the stadium every February. Even in quieter months, the course wears its legacy well — pristine conditioning, generous landing areas, and a routing that's a genuine pleasure to walk or ride.

The 16th hole is the one everyone asks about. It's a 163-yard par 3, fully enclosed by the stadium framework that goes up each year. Playing it is one of those moments every golfer who watches TV wants to check off. Bring your camera.

COURSE DESIGNER

Weiskopf & Morrish

1986 · Renovated 2014

PAR · STYLE

71 · Stadium desert

Home of the WM Phoenix Open

BEST FOR

Bucket-list hunters

The 16th hole experience

GREEN FEE ●●●●

SCORECARD · TEES, YARDAGE, SLOPE & RATING

TEE	YARDAGE	SLOPE	RATING
● BLACK	7,261	141	74.9
● BLUE	6,769	135	72.6
○ WHITE	6,289	129	70.4
● GOLD	5,567	121	67.0

LOCAL KNOWLEDGE

Book early in the week if you can. Weekend tee times are nearly impossible during tournament season. The Grille has some of the best post-round food in Scottsdale.



MARICOPA, ARIZONA

Ak-Chin Southern Dunes

A links-style layout that feels nothing like the rest of Scottsdale

Photo: @BrianOar

Southern Dunes is the outlier in the Valley, and that's the point. Fred Couples and Brian Curley took inspiration from Scottish links courses — massive waste areas, sharply sculpted bunkers, and firm fairways that demand ground-game creativity. Wide corridors look forgiving until the wind picks up; then every shot becomes a puzzle.

About 45 minutes south of Scottsdale on the Ak-Chin Indian Community's land, it rewards the drive. Regulars say it's the most fun round in the Valley when you're playing well, and the most interesting when you're not.

COURSE DESIGNER

Fred Couples & Brian Curley

Opened 2002

PAR · STYLE

72 · Links-style desert

Wind-shot creativity

BEST FOR

Experienced players

A genuinely different round

GREEN FEE ●●●●

SCORECARD · TEES, YARDAGE, SLOPE & RATING

TEE	YARDAGE	SLOPE	RATING
● BLACK	7,546	140	76.6
● BLUE	7,085	134	74.1
○ WHITE	6,600	128	71.6
● GOLD	5,900	121	68.0

LOCAL KNOWLEDGE

Bring a low running shot for the wind. Drive from Old Town is about 45 minutes, so build it into a morning with an In-N-Out stop on the way back.

SCOTTSDALE, ARIZONA

Phoenician

The most luxurious round in Scottsdale, tucked into the base of Camelback

Photo: @BrianOar

The Phoenician's 2018 redesign transformed it from a dated resort course into one of the most stunning public layouts in the Valley. Phil Smith reshaped every hole at the base of Camelback Mountain, with cascading water features, dramatic elevation changes, and some of the best practice facilities in Arizona.

Everything here is resort-level: the valets, the pro shop, the service culture, the food. It plays forgiving for mid-handicappers and challenging for better players who push from the back tees. If your group wants the most polished round on the trip, this is it.

COURSE DESIGNER

Phil Smith

Redesigned 2018

PAR · STYLE

71 · Resort parkland

Cascading water features

BEST FOR

Mixed-skill groups

Luxury resort experience

GREEN FEE ●●●●

SCORECARD · TEES, YARDAGE, SLOPE & RATING

TEE	YARDAGE	SLOPE	RATING
● BLACK	6,518	135	71.8
● BLUE	6,082	129	69.8
○ WHITE	5,558	122	67.6
● GOLD	5,069	116	65.3

LOCAL KNOWLEDGE

The practice range is one of the best in Arizona — get there 45 minutes early. Stay for lunch at the clubhouse; the Camelback view with a cold drink is hard to beat.

SCOTTSDALE, ARIZONA

Camelback | Ambiente

A links-style layout in the heart of Scottsdale, between Camelback and Mummy Mountain

Photo: @BrianOar

Jason Straka's 2013 redesign moved 365,000 cubic yards of dirt to create 10- to 12-foot elevation changes on every hole — a bold move that transformed an unremarkable resort course into one of the most interesting layouts in central Scottsdale. Firm greens, creative green complexes, and troublesome fescue make this a genuine links experience in the desert.

Views of Camelback and Mummy Mountain frame every hole, and the resort's central location means you can play 18 and be at dinner in Old Town within 20 minutes. Pair with Padre for a 36-hole day that shows two very different sides of the property.

COURSE DESIGNER

Jason Straka
Redesigned 2013

PAR · STYLE

72 · Desert-links hybrid
12-foot elevation changes

BEST FOR

Central Scottsdale stays
Links-style in the heart of town

GREEN FEE ●●●●

SCORECARD · TEES, YARDAGE, SLOPE & RATING

TEE	YARDAGE	SLOPE	RATING
● BLACK	7,200	137	74.1
● BLUE	6,710	131	71.8
○ WHITE	6,218	125	69.4
● GOLD	5,496	118	66.4

LOCAL KNOWLEDGE

Firm greens and fescue reward creativity over power. When wind kicks up, elevation changes become a one- or two-club difference — check the flag every approach.

CAREFREE, ARIZONA

Boulders

Jay Morrish at his peak, threading fairways between 12-million-year-old boulders

The Boulders Resort's North and South courses sit among the most iconic desert settings in the world — 12-million-year-old granite formations tower over fairways and greens, creating natural amphitheaters and blind shots that define the round. Jay Morrish routed both courses with reverence for the landscape, and the result is pure desert golf theater.

The resort has been a Carefree landmark since the 1980s, and while the golf is the headline, the setting is what guests remember. Between the two courses, we usually recommend the South for group play and the North for the more dramatic scenery.

COURSE DESIGNER

Jay Morrish

North 1986 · South 1991

PAR · STYLE

72 · Boulder-strewn desert

Iconic AZ scenery

BEST FOR

Scenic-first rounds

One of the most photographed resorts in AZ

GREEN FEE ●●●●

SCORECARD · TEES, YARDAGE, SLOPE & RATING

TEE	YARDAGE	SLOPE	RATING
● BLACK	6,934	138	72.7
● BLUE	6,492	132	70.6
○ WHITE	6,040	126	68.5
● GOLD	5,181	117	65.0

LOCAL KNOWLEDGE

North is the tougher walk and more scenic; South is the stronger test. Groups tend to prefer South if only playing one. Stay for the resort restaurants.

GOLD CANYON, ARIZONA

Dinosaur Mountain

Arizona Golf Authority called it one of the best values in the Southwest

Photo: @BrianOar

Dinosaur Mountain is the course Gold Canyon built its reputation on. Ken Kavanaugh used dramatic natural elevation to create holes that play up, down, and across the foothills of the Superstition Mountains — a round with more elevation change than any other course in the Valley. Four-star Golf Digest rating, ranked the #1 public course in Arizona in 2001 and 2002.

About 45 minutes east of Scottsdale, which is its only catch. Once you're there, it's worth every mile. Pair with Sidewinder for a 36-hole day and stay at the Gold Canyon Resort to make it a full trip.

COURSE DESIGNER

Ken Kavanaugh

Back 9 1986 · Front 9 1997

PAR · STYLE

70 · Mountain desert

Dramatic elevation changes

BEST FOR

Elevation junkies

Former #1 public AZ course

GREEN FEE ●●●●

SCORECARD · TEES, YARDAGE, SLOPE & RATING

TEE	YARDAGE	SLOPE	RATING
● BLACK	6,584	140	71.1
● BLUE	6,240	136	69.7
○ WHITE	5,788	129	67.5
● GOLD	5,082	121	64.5

LOCAL KNOWLEDGE

The drive is 45 minutes — build it into a full day and pair with Sidewinder. Bring layers in winter; elevation makes mornings genuinely cold.



SALT RIVER RESERVATION, SCOTTSDALE

Talking Stick | O'odham

Coore & Crenshaw's first desert course, and still one of their best

Photo: @BrianOar

The O'odham Course is where Bill Coore and Ben Crenshaw first applied their minimalist philosophy to desert golf, three years before Bandon Dunes established them as the most sought-after design team in the world. Wide-open corridors, natural Sonoran terrain, firm fescue, and large punchbowl greens reward ground-game creativity over raw distance.

On the Salt River Pima-Maricopa Indian Community land 15 minutes from Old Town, it's the closest thing you'll get to true Scottish links golf in the desert. Pair with Piipaash for 36 that shows the full range of what the Coore & Crenshaw team can do.

COURSE DESIGNER

Coore & Crenshaw

Opened 1998

PAR · STYLE

70 · Desert links

Minimalist design

BEST FOR

Purists who like walking

Ground-game creativity

GREEN FEE ●●●●

SCORECARD · TEES, YARDAGE, SLOPE & RATING

TEE	YARDAGE	SLOPE	RATING
● BLACK	7,133	131	73.4
● BLUE	6,773	127	71.7
○ WHITE	6,348	121	69.8
● GOLD	5,532	115	66.2

LOCAL KNOWLEDGE

Flatter than most Scottsdale layouts — genuinely walkable if your group's up for it. Orange Sky at Talking Stick Resort does a strong post-round lunch.

BUCKEYE, ARIZONA

Verrado | Founders

The course that made Buckeye worth the drive

Founders sits 45 minutes west of Scottsdale in the master-planned Verrado community, and it's the course that first convinced Scottsdale regulars the West Valley had real golf. John Fought's routing follows the natural contours at the base of the White Tank Mountains, with wide corridors, strategic bunkering, and elevation changes that keep every round interesting.

The round out here plays different than Scottsdale's target-desert courses — more traditional, more forgiving, more scenic. Best paired with Victory (the younger sister course) for a 36-hole West Valley day.

COURSE DESIGNER

John Fought

Opened 2005

PAR · STYLE

72 · Mountain-desert hybrid

Natural contours

BEST FOR

Big groups, scenic value

4-star Golf Digest sleeper

GREEN FEE ●●●●○

SCORECARD · TEES, YARDAGE, SLOPE & RATING

TEE	YARDAGE	SLOPE	RATING
● BLACK	7,258	135	74.3
● BLUE	6,801	129	72.0
○ WHITE	6,326	123	69.8
● GOLD	5,682	116	66.8

LOCAL KNOWLEDGE

Drive from Scottsdale is why more groups don't play here, but it's worth it. Stop at the Victory Club between rounds if you play both — patio views are incredible.

PHOENIX, ARIZONA

Papago

Phoenix's historic muni, still one of the best values in the Valley

Papago opened in 1963 and has hosted the USGA Public Links and multiple NCAA Championships in its history. William F. Bell designed a classic parkland layout that's surprisingly flat and walkable, framed by the red Papago Buttes and minutes from Sky Harbor. A 2008 restoration modernized the conditioning without touching the bones of the original design.

It's a genuine muni — you'll play alongside locals, the pace is steady, and the price is the best in the Valley. For groups that appreciate walking and a round that rewards shotmaking over power, there's nothing else like it in Scottsdale.

COURSE DESIGNER

William F. Bell

Opened 1963 · Restored 2008

PAR · STYLE

72 · Classic municipal

Host of 1971 USGA Public Links

BEST FOR

Walking and history

Best value in the Valley

GREEN FEE ●●●●

SCORECARD · TEES, YARDAGE, SLOPE & RATING

TEE	YARDAGE	SLOPE	RATING
● BLACK	7,333	134	74.7
● BLUE	6,784	128	72.2
○ WHITE	6,197	122	69.5
● GOLD	5,367	113	65.2

LOCAL KNOWLEDGE

Book a 7 or 8 am tee time to beat the heat. One of the few Valley courses where walking actually makes sense. The 18th green view of the Papago Buttes is unreal.

TEMPE, ARIZONA

Grass Clippings

Arizona's only lit course, home of the Grass League, and 10 minutes from Sky Harbor

Photo: @BrianOar

G rass Clippings sits at Rolling Hills Park in Tempe and reinvented itself as a social, lit-at-night par-3 experience that's unlike anything else in Arizona. Home of the Grass League, host to late-night group play, and widely considered the best way to kick off a Scottsdale trip — land at the airport, check into the hotel, and tee it up under the lights that same night.

Daytime plays as a par 60 at 3,530 yards with some real par-4 length. At night, the course shifts to par 54 / 2,712 yards, all holes under lights. The vibe is casual, the drinks flow, and groups of any skill level will have a blast. Not a traditional round — but that's the point.

COURSE DESIGNER

Reimagined 2023

The Rolling Hills redesign

PAR · STYLE

60 Day · 54 Night

All-holes lit night play

BEST FOR

Trip openers

First-night landing play

GREEN FEE ●●●●

SCORECARD · TEES, YARDAGE & PAR

TEE	YARDAGE	PAR
● DAY	3,530	60
● NIGHT	2,712	54

LOCAL KNOWLEDGE

Book the night session if you can — it's what separates Grass Clippings from anywhere else in Arizona. 10 minutes from Sky Harbor makes this a perfect first-night play.



CENTRAL SCOTTSDALE

Camelback

Padre Course

Arthur Hills · 1999 redesign

Camelback's second championship layout, often in the shadow of Ambiente but a strong round in its own right. Towering eucalyptus trees, strategic doglegs, and water in play on the back nine lead to a finishing par 5 widely considered one of the best in the state. Same flawless conditioning as its sister course across the resort.

LOCAL KNOWLEDGE

Book the twilight window if you can. Padre is flat-out gorgeous when the mountains catch the late light.

GREEN FEE ● ● ● ●

PAR	YARDAGE	RATING	SLOPE
72	6,903	72.3	131

FOUNTAIN HILLS

Desert Canyon Golf Club

Ken Kavanaugh

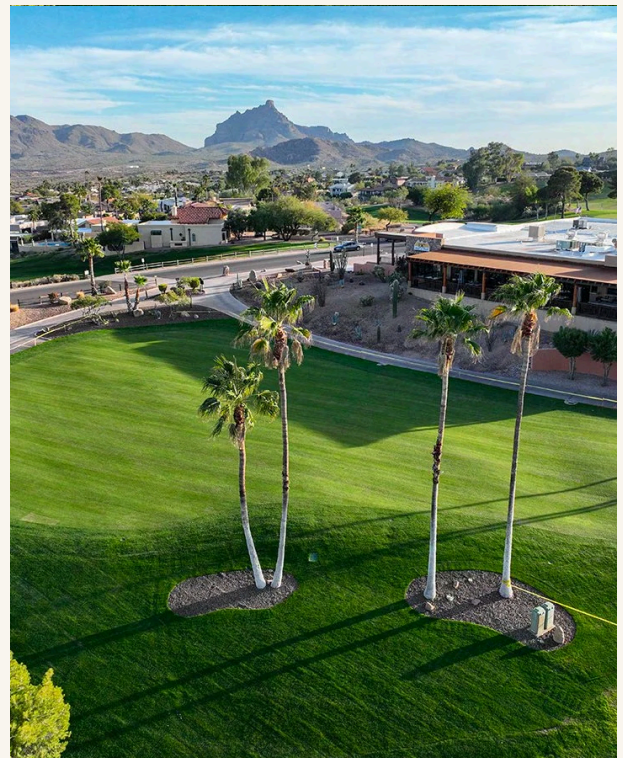
A traditional mountain-backed layout tucked into the foothills of the McDowells. Forgiving landing areas for most of the round with a handful of tighter desert carries that keep it interesting. Great value play without sacrificing scenery.

LOCAL KNOWLEDGE

One of the best value rounds in Fountain Hills. Ideal shoulder-day golf when the group needs a breather.

GREEN FEE ● ● ● ●

PAR	YARDAGE	RATING	SLOPE
71	6,423	70.2	129





CAVE CREEK

Dove Valley Ranch Golf Club

Robert Trent Jones Jr. · 1998

A Robert Trent Jones Jr. design that departs from typical Arizona target golf. Wide corridors, player-friendly transitions, and petroglyph-etched boulders marking holes. Plays through willow wash and open desert just 20 minutes north of Scottsdale, with enough bite from the tips to hold a scratch player's attention.

LOCAL KNOWLEDGE

Underrated and usually wide open. A great pick when the peak-season resorts are booked solid.

GREEN FEE ● ● ● ●

PAR	YARDAGE	RATING	SLOPE
72	7,095	73.1	133



FOUNTAIN HILLS

Eagle Mountain Golf Club

Scott Miller · 1996

A departure from target-style desert golf with forgiving fairways, elevated tees, and panoramic McDowell Mountain views on almost every hole. The signature 17th, Sunset Point, is one of the most photographed par 3s in the Valley. Sits under Troon Golf management so conditioning and service stay consistently tight.

LOCAL KNOWLEDGE

Ask for a tee time after 2pm in winter. Eagle Mountain's sunsets are worth the round by themselves.

GREEN FEE ● ● ● ●

PAR	YARDAGE	RATING	SLOPE
71	6,800	71.4	134





GOLD CANYON · SUPERSTITIONS

Gold Canyon

Sidewinder Course

Ken Kavanaugh

A 4-star Golf Digest layout at the base of Dinosaur Mountain, threading through arroyos, dry creek beds, and native Sonoran vegetation. Less dramatic elevation than its big-brother Dinosaur course but considerably more affordable, with the same Superstition Mountain backdrop. Pairs perfectly with Dinosaur Mountain for a 36-hole day.

LOCAL KNOWLEDGE

Best value round in the East Valley. Great morning play when you're lodging out at Gold Canyon Resort.

GREEN FEE ● ● ● ●

PAR	YARDAGE	RATING	SLOPE
71	6,530	71.8	130



NORTH SCOTTSDALE

Grayhawk

Talon Course

David Graham & Gary Panks · 1994

The original Grayhawk layout and still one of the most celebrated desert courses in North Scottsdale. Five sets of tees, dramatic elevation changes, and native desert waste areas that frame every hole without punishing the average player. Same five-star service you get at the Raptor, just a different character of round.

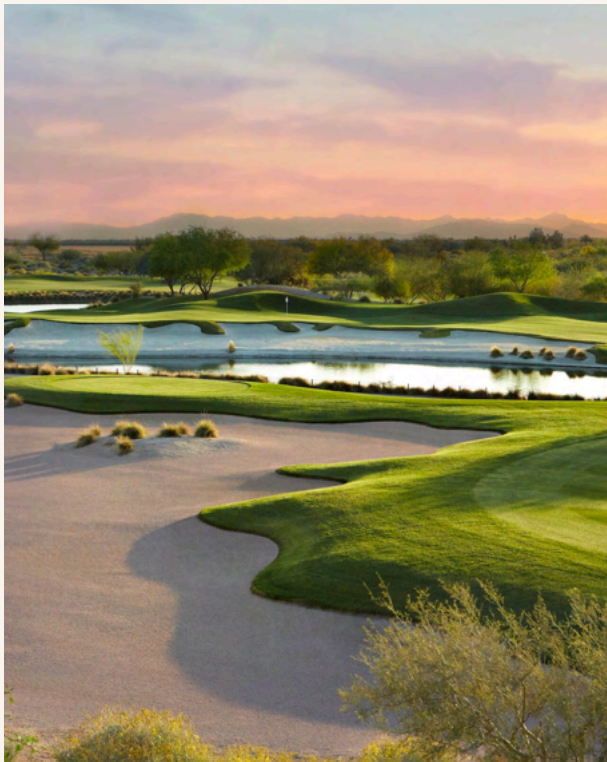
LOCAL KNOWLEDGE

The par-3 17th with its island-esque green is one of the most-shared photos to come out of Scottsdale every year.

GREEN FEE ● ● ● ●

PAR	YARDAGE	RATING	SLOPE
72	6,973	73.3	138





EAST VALLEY · MESA

Longbow Golf Club

Ken Kavanaugh · 2003

One of the East Valley's most consistent conditioning stories and a regular Top 50 list mention in Arizona. Generous fairways, mature trees, and zero housing on most of the front nine. Located near the Salt River with mature tree lines giving it a parkland feel rare in the desert.

LOCAL KNOWLEDGE

Great round to stack when you're already playing Talking Stick or flying in and out of Sky Harbor. Tee-to-green conditioning punches above its price point.

GREEN FEE ● ● ● ●

PAR	YARDAGE	RATING	SLOPE
71	7,003	73.2	132



NORTH SCOTTSDALE

McDowell Mountain Golf Club

Scott Miller

A Scott Miller design that sits against a protected desert preserve, giving it some of the quietest views of any public course in North Scottsdale. Plenty of elevation change, strategic bunkering, and cactus-lined fairways. Historically plays as one of the better-conditioned value rounds in the north.

LOCAL KNOWLEDGE

When the Troon North tee sheets are full, this is where the locals send you. Ten minutes away, half the price.

GREEN FEE ● ● ● ●

PAR	YARDAGE	RATING	SLOPE
72	7,025	72.6	132



Photo: @BrianOar



CENTRAL SCOTTSDALE

McCormick Ranch

Palm Course

Desmond Muirhead · 1972

Water in play on 10 holes and mature palms framing wide fairways. Classic parkland design with panoramic mountain views and big sparkling lakes that give the course its character. One of the strongest value plays in central Scottsdale.

LOCAL KNOWLEDGE

The par-4 9th has been named one of America's top 18 water holes. Bring an extra sleeve for it.

GREEN FEE ● ● ● ●

PAR	YARDAGE	RATING	SLOPE
72	7,044	73.7	137



CENTRAL SCOTTSDALE

McCormick Ranch

Pine Course

Desmond Muirhead · 1972

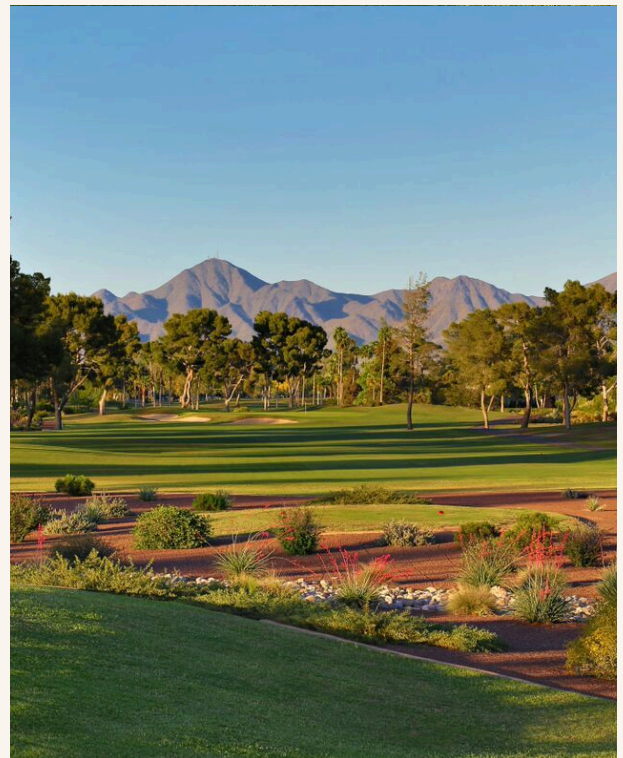
The longer and more demanding of the McCormick pair. Fewer water hazards than Palm but elevated, well-protected greens create the scoring challenge. Rated higher than many Signature-tier layouts from the tips, and one of the stronger tests for low-handicap groups at a fair price.

LOCAL KNOWLEDGE

Play Pine in the morning and Palm in the afternoon. 36 at McCormick is a full Scottsdale day done right.

GREEN FEE ● ● ● ●

PAR	YARDAGE	RATING	SLOPE
72	7,187	74.3	134





EAST VALLEY · GILBERT

Power Ranch Golf Club

Ken Kavanaugh

A consistently well-conditioned parkland layout in Gilbert with rolling contours, mature cottonwoods, and strategic water features. Not a target-desert course, which makes it a great shift in character during a longer trip. Known locally for agronomy that punches well above its price.

LOCAL KNOWLEDGE

High value play, strong agronomy. Good to pair with Longbow or Gold Canyon for an East Valley loop.

GREEN FEE ● ● ● ●

PAR	YARDAGE	RATING	SLOPE
71	6,764	72.0	127

FOUNTAIN HILLS

SunRidge Canyon Golf Club

Keith Foster · 1995

Famous for "The Wicked 6," a stretch of closing holes that plays uphill through a canyon and has broken more than a few scorecards. Dramatic elevation changes, tight desert carries, and views of the Four Peaks from almost every tee box. A proper test for better players and a stunner for everyone else.

LOCAL KNOWLEDGE

Keep your drives in play on 13 through 18. The last six are some of the most memorable and demanding finishing holes in the Valley.

GREEN FEE ● ● ● ●

PAR	YARDAGE	RATING	SLOPE
71	6,823	71.8	139





Photo: @BrianOar

SALT RIVER RESERVATION

Talking Stick

Piipaash Course

Coore & Crenshaw · 1998

The Coore & Crenshaw links counterpart to the O'odham Course, playing flatter with tighter fairways, more bunkering, and strategic angles that reward well-placed shots over raw distance. Feels like desert links golf. Faster pace than O'odham and widely considered the more interesting puzzle.

LOCAL KNOWLEDGE

Locals lean Piipaash over O'odham. More variety, more to think about on every hole.

GREEN FEE ● ● ● ●

PAR	YARDAGE	RATING	SLOPE
71	6,833	72.3	125

NORTH SCOTTSDALE

TPC Scottsdale

Champions Course

Randy Heckenkemper · 2007 redesign

Same property, same grounds crew, and nearly the same conditioning as Stadium Course next door, usually at about half the green fee. A strong round in its own right with five sets of tees and plenty of birdie opportunities for mid-handicappers. Locals know it's one of the smartest price-to-quality plays in North Scottsdale.

LOCAL KNOWLEDGE

Same grounds crew, same quality, usually about half the cost. Locals prefer Champions when Stadium tee sheets are tight.

GREEN FEE ● ● ● ●

PAR	YARDAGE	RATING	SLOPE
71	7,115	73.5	134





NORTH SCOTTSDALE

Troon North

Monument Course

Weiskopf & Morrish · 1990

The original Troon North layout, named for a massive granite boulder that splits the par-5 3rd fairway. Some of the most signature holes in North Scottsdale, a rugged boulder-strewn canvas that defined the desert target golf category. Same legendary service and conditioning as Pinnacle, just a different flavor of round.

LOCAL KNOWLEDGE

Some of the most signature holes in North Scottsdale. Arguably the best views of any course in the Valley.

GREEN FEE ● ● ● ●

PAR	YARDAGE	RATING	SLOPE
72	7,028	73.3	147



WEST VALLEY · BUCKEYE

Verrado

Victory Course

Tom Lehman & John Fought · 2009

The younger and more demanding of the Verrado pair, designed by Tom Lehman in the classic strategic tradition. Bold contours, fescue-lined fairways, and views of the White Tank Mountains. Frequently appears on Arizona's Top 10 Public Course lists and is the sleeper value play in the West Valley.

LOCAL KNOWLEDGE

West Valley is underrated. Worth the drive for a day, and Victory is the course that makes the trip worth it.

GREEN FEE ● ● ● ●

PAR	YARDAGE	RATING	SLOPE
72	7,258	74.6	138





Package Specials

FEATURED PACKAGE SPECIALS

Four packages, already priced and ready to book

Pre-built trips with everything handled: tee times, lodging, transfers. Customize the group size, the dates, or swap a course. The prices below are starting points per person for a standard group.



WE-KO-PA

Photo: @BrianOar

We-Ko-Pa Stay & Play

FROM
\$599
per person

Two of Arizona's best public courses, back-to-back.

We-Ko-Pa sits in the shadow of the McDowells, with two top-ranked courses and a hidden gem local favorite to round out the trip. The casino is a hundred steps from your room. Stay put, play golf, skip the windshield time.

TRIP

3 Nights · 3 Rounds

LODGING

We-Ko-Pa Resort & Casino

COURSES

We-Ko-Pa Cholla · Eagle Mountain · We-Ko-Pa Saguaro

Scottsdale Must Play

FROM
\$619
per person

The four rounds every first-timer asks about by name.

A Rees Jones bucket-list round at Quintero, a US Open qualifying site at Ak-Chin, a resort-level finish at The Phoenician, and a Coore & Crenshaw walk-off at Saguaro. Stay in Old Town so the non-golf hours are just as easy.

TRIP

3 Nights · 4 Rounds

LODGING

Hyatt House Old Town

COURSES

Quintero · Ak-Chin Southern Dunes · The Phoenician · We-Ko-Pa Saguaro



QUINTERO

Photo: @BrianOar



TALKING STICK

Photo: @BrianOar

Scottsdale Local Favorites

FROM
\$485
per person

Real Arizona golf at a price that makes the next trip easier.

Not every trip needs a bucket-list price tag. This package puts you on three of the Valley's most-played courses, sets you up at a solid Old Town base, and gets you home without the regret.

TRIP

3 Nights · 3 Rounds

LODGING

Hyatt House Old Town

COURSES

Longbow · Papago · Talking Stick O'odham

Best of the Best

FROM
\$799
per person

The Scottsdale bucket list, built in four days.

Four rounds that leave nothing on the table. Coore & Crenshaw's Saguaro, night golf under the lights at Grass Clippings, a Rees Jones bucket-list round at Quintero, and a Fazio championship test at the Raptor. Stay at the Holiday Inn Vacation Resort, minutes from TPC Scottsdale.

TRIP

3 Nights · 4 Rounds

LODGING

Holiday Inn Vacation Resort · 2BR/2BA Villa

COURSES

We-Ko-Pa Saguaro · Grass Clippings · Quintero · Grayhawk Raptor



QUINTERO

Photo: @BrianOar

WANT A CUSTOM TRIP INSTEAD?

Every package is a starting point. We build to fit your group.

@GolfScottsdaleArizona

480-716-4994

A scenic view of a golf course at sunset. The foreground shows a green golf course with a flag on a green. In the middle ground, there are several tall saguaro cacti and some buildings. In the background, there are mountains and a city skyline under a hazy, golden sky. The text "Plan Your Trip" is overlaid in the center in white, with two short orange horizontal lines above and below it.

Plan Your Trip

WHERE YOU STAY

The homes your group will talk about as much as the golf

Six private homes we book the most. The things these properties have that a hotel doesn't: your own pool, a kitchen, a game room, and 20 players under one roof instead of scattered across a floor.



THE MOST-BOOKED

Birdie Houses

NORTH SCOTTSDALE · RENOVATED 2026

SLEEPS	BEDROOMS	BATHROOMS	BEDS
16	7	4	12

Our most-booked home for buddies trips, and the only one built with a private golf complex on-site. Freshly renovated for 2026 with a commercial sim, cold plunge, sauna, and a backyard built for sixteen players to live together without anyone crashing on a couch.

HIGHLIGHTS

Private golf complex · Commercial golf simulator · Cold plunge + sauna · Heated pool · 12 individual beds

Saguaro Point

NORTH SCOTTSDALE

SLEEPS	BEDROOMS	BATHROOMS	BEDS
20	9	9.5	14

Built for golfers, by golfers. A private par 3 complex in the backyard, a full commercial simulator inside, a heated pool and jacuzzi, and sweeping McDowell views. Groups come for the golf buildout and stay because the rest of the house is just as dialed.

HIGHLIGHTS

Private par 3 complex · Commercial golf simulator · Heated pool + jacuzzi · Putting green · Panoramic views



THE GOLF BUILDOUT

19th Hole Estate

NORTH SCOTTSDALE

SLEEPS	BEDROOMS	BATHROOMS	BEDS
28	10	11	16

A \$6M modern estate where every bedroom is ensuite and the backyard is a resort. When the group wants everything on one property — golf sim, pool with a water slide, movie theater, pickleball, ramada with a swim-up bar — this is the answer.

HIGHLIGHTS

\$80K commercial golf sim · Water-slide pool · Movie theater · Pickleball + basketball · 16 individual beds



THE FULL RESORT



THE BIGGEST

Hozho on Cattle Track

NORTH SCOTTSDALE

SLEEPS	BEDROOMS	BATHROOMS	BEDS
32	11	12	17

The biggest of our big. 9,000+ square feet, 11 bedrooms, a sauna and cold plunge, and amenities for every interest in the group. Book this for milestone trips, corporate retreats, and groups where nobody is crashing on a couch.

HIGHLIGHTS

\$80K golf sim · Resort pool with slide · Sauna + cold plunge · Movie theater · Pickleball + basketball

Hozho on Pinnacle Peak

NORTH SCOTTSDALE · PINNACLE PEAK VIEWS

SLEEPS	BEDROOMS	BATHROOMS	BEDS
24	10	10	12

Pinnacle Peak views, a swim-up bar, and a golf sim that's genuinely legit. The fun house — booked for bachelor parties and trips where the pool scene matters as much as the tee times.

HIGHLIGHTS

Swim-up bar · Sunken ramada · \$80K golf sim · Pool table + shuffleboard · Pinnacle Peak views



THE FUN HOUSE



THE ON-SITE PAR 3

Pinnacle Par 3

NORTH SCOTTSDALE · 7.5 PRIVATE ACRES

SLEEPS	BEDROOMS	BATHROOMS	BEDS
18	5	4	10

360-degree views of Pinnacle Peak, the McDowells, and Camelback. 7.5 private acres where the on-site par 3 is just one of the things your group will remember. A 5-minute walk to the Pinnacle Peak trailhead when the non-golfers want a morning hike.

HIGHLIGHTS

On-site par 3 hole · Detached casita · Loft bar + shuffleboard · Glass wine cellar · Sport court

RESORT PARTNERS

Four resorts for the groups that want hotel service

When a private home isn't the fit — a bigger group, mixed needs, or players who want a pool scene and room service — these four cover every trip type.



OPENING FALL 2026

WALK TO THE FIRST TEE

Troon North Retreat

NORTH SCOTTSDALE · STEPS FROM THE CLUBHOUSE

Wake up, walk to the first tee. When this opens in Fall 2026, it changes what a Troon North stay looks like — desert modern villas placed in the Sonoran Desert right next to the Troon North clubhouse and first tee. One-bedroom and four-bedroom suites designed golf-group-first, so a foursome or a full group stays in actual living space instead of hotel rooms.

HIGHLIGHTS

- 1-BR & 4-BR suites
- Steps from the clubhouse & first tee
- Pool hang area
- Desert modern villas
- Designed for golf groups, not hotel stays



GOLF + CASINO

We-Ko-Pa Resort & Casino

FORT MCDOWELL

Two top-100 public courses on property, a casino, a steakhouse, and a sportsbook. We book the Golf Junior Suites — the go-to room type when you want to stay on property and never move your clubs.

HIGHLIGHTS

- Two on-property courses
- Casino + sportsbook
- Golf Junior Suites
- On-site steakhouse
- No shuttle needed



LUXURY RESORT

The Scottsdale Resort & Spa

MCCORMICK RANCH

Post-\$40M renovation, back in the top tier of Scottsdale resorts. We feature the Stillman Villas for groups of 12–14 — a 5-BR villa with a private pool, individually key-carded bedrooms, and McCormick Ranch Golf Club views.

HIGHLIGHTS

- Post-\$40M renovation
- Stillman Villas (5-BR)
- Private pool
- Key-carded bedrooms
- McCormick Ranch views



CASINO + OLD TOWN

Talking Stick Resort

SALT RIVER · 15 MIN TO OLD TOWN

Casino gaming, Coore & Crenshaw golf next door at O'odham, and the shortest drive to Old Town of any resort on this list. Central option for groups that want gaming plus an easy walk to dinner.

HIGHLIGHTS

- Coore & Crenshaw golf next door
- Casino + entertainment
- 15 min to Old Town
- Sportsbook
- Pool deck

FOR TEAMS & CLIENTS

CORPORATE GOLF RETREATS

Team offsites, client trips, and annual outings, handled.

When the ROI of the trip matters as much as the scores.

Corporate golf in Scottsdale works because everything scales. We coordinate trips from eight-person leadership offsites up to sixty-player client tournaments, across courses that can handle shotgun starts and resorts that can handle full buyouts. What the group shows up to is the golf. What we handle behind the scenes is everything that makes it look easy.

USE CASE 01

Leadership Offsites

Executive retreats that mix tee times with meeting space. We coordinate both.

USE CASE 02

Client Outings

Hosting 12 of your best accounts for a weekend they will actually remember.

USE CASE 03

Annual Tournaments

Shotgun starts, prizing, scoring, and the awards dinner. All of it.

USE CASE 04

Team Building

For teams that want golf as the backdrop, not the agenda. Mixed-skill friendly.

WHAT WE HANDLE

So your team shows up and plays

- **Tee times & course selection** across 200+ Valley courses
- **Lodging** from resort rooms to full-house buyouts
- **Meeting space** coordination at resort partners
- **Tournament setup** scoring, prizing, awards
- **Individualized billing** no Venmo chains, each player pays their own
- **Shotgun starts** for groups of 40+
- **Transportation** between courses, lodging, and airport
- **Group dining** reservations and buyouts
- **Custom merchandise** logo balls, apparel, gifts
- **On-trip support** someone to call when anything shifts

Ready to plan your corporate outing? Tell us your group size, dates, and budget — we'll put together a proposal within 24 hours. Email azquote@golfpackagepros.com or call us directly.

480-716-4994

@GOLFSCOTTSDALEARIZONA

WHERE TO EAT

Twelve places we actually send groups

Four categories, hand-picked for how golf groups travel. Reservations recommended at most. When the group is twelve-deep, these spots say yes and deliver.

01 Mexican

You're in Arizona, eat accordingly

ALMA

CENTRAL SCOTTSDALE

Hand-formed empanadas, fresh tortillas, seasonal salsas, and an extensive tequila selection.

Blanco Cocina + Cantina

SCOTTSDALE · PHOENIX

Bold flavors, high-quality ingredients, and a stylish setting. Modern Mexican done right.

The Mission

OLD TOWN · KIERLAND

Fusion flavors, tableside guacamole, wood-grilled meats, seafood, and tacos. A Scottsdale staple.

02 American Gastropub

Group-friendly, patio-forward

Culinary Dropout

SCOTTSDALE · PHOENIX · TEMPE

Eclectic menu with signature burgers, gourmet appetizers, and tasty cocktails. Loud, fun, shareable.

Isabella's Kitchen

GRAYHAWK · NORTH SCOTTSDALE

Patio hangout with pizza, salads, sandwiches, pastas, and golf course views. Easy pre- or post-round at Grayhawk.

The Vig

MULTIPLE AZ LOCATIONS

Diverse dishes, gourmet burgers, wood-fired pizzas, and fresh salads in a casual setting.

03 Sports Bar

For the game, the beers, and the big group

Barstool

OLD TOWN SCOTTSDALE

Old Town's top spot for sports, bites, and brews. Don't forget to mix in a water.

DraftKings Sportsbook at TPC Scottsdale

TPC SCOTTSDALE

The ultimate sports fan hangout. Delicious bites and drinks, right on the TPC property.

Zipps

MULTIPLE AZ LOCATIONS

Classic American fare, burgers, wings, shareable platters, and cold beers with lots of TVs.

04 Steakhouse

For the trip-defining dinner

Dominick's

NORTH SCOTTSDALE

A unique spin on the classic steakhouse. Be sure to ask for a reservation upstairs.

Fat Ox

CENTRAL SCOTTSDALE

An Italian spin with incredible pasta and delicious entrees. A favorite for groups wanting something different.

Mastro's

MULTIPLE AZ LOCATIONS

A staple of the Valley, seen by many as the most reliable fine dining experience in Scottsdale.

BEYOND THE 18

Six things we send groups to when they want more golf or less of it

Three picks for groups that can't get enough golf, three classic Arizona hikes for the morning before a round or the off-day.

01 Golf-Related Activities

When one round a day isn't enough



UNDER THE LIGHTS

LIGHTED 18

Grass Clippings

The first fully lit 18-hole golf course in Arizona. Tee off after dinner.

The twilight round that doesn't end when the sun goes down. Ten minutes from Old Town, open late, and the reason groups are adding a fifth round to four-day trips. We feature it in the Best of the Best package for a reason.

DISTANCE	TIME	BEST FOR
10 min from Old Town	Evening rounds	Bonus round nights

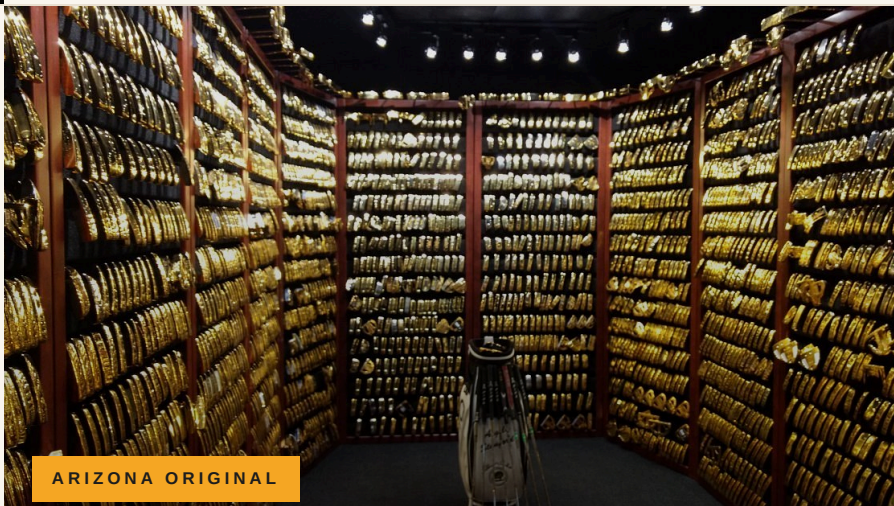
BRAND PILGRIMAGE

PING Campus Tour

The story that started in the Solheim family's garage, on the campus where it still lives.

Almost no one outside Arizona knows you can do this. The PING campus is right here in Phoenix, and the guided tour walks through the history, the prototypes, and the craftsmanship that built one of the most respected brands in golf. Bring a camera.

LOCATION	TIME	BEST FOR
Phoenix	60-90 min	Gear nerds



ARIZONA ORIGINAL

SHORT GAME FIX

Putting World

First of its kind. An indoor facility built 100% around putting.

Game improvement meets group entertainment. Climate-controlled, built for instruction and for competition, and the kind of spot where the group bet on the back nine gets settled in a ten-hole putting shootout. A fresh, weird, Scottsdale-only option.

TYPE	TIME	BEST FOR
Indoor facility	1-2 hours	Rainy days, rematches



INDOOR GAME ROOM

02 Desert Hiking

Three trails, three difficulty levels, all under two hours



HARD · ~2 HOURS

Camelback Mountain

The famous landmark in the heart of Scottsdale. Break a sweat before the first tee.

Two trails to the summit, Echo Canyon and Cholla, both no-joke scrambles in spots. Go early. By 10am the heat turns it into a different hike entirely. The views from the top cover most of the courses in this guide.

DIFFICULTY	TIME	BEST FOR
Hard	~2 hours	Sunrise crew

MODERATE · ~2 HOURS

Pinnacle Peak

Set amongst the North Scottsdale private golf communities.

The trail winds through the same desert landscape that frames Troon North, Estancia, and Mirabel. Well-maintained, moderate enough for mixed fitness levels, and a five-minute walk from our Pinnacle Par 3 rental. The place we send groups staying in North Scottsdale.

DIFFICULTY	TIME	BEST FOR
Moderate	~2 hours	Mixed groups



EASY · ~1 HOUR

Papago

A walk among the Papago Buttes in Tempe. Watch for stray golf balls.

Flat, short, and iconic. The Papago Buttes rise straight out of the desert floor next to the Papago golf course, and the trail loops through at an easy pace. The casual morning move when the group wants to stretch out before a 10am tee time.

DIFFICULTY	TIME	BEST FOR
Easy	~1 hour	Warm-up walks



READY TO PLAN

Four steps, one conversation, zero back-and-forth.

Most groups go from first call to locked-in trip in under a week. Here's exactly how it works, what's due when, and what your group needs to do on arrival day.

THE BOOKING PROCESS

<p>1</p> <p>Tell Us the Trip</p> <p>Group size, dates, courses you want, lodging vibe. Call, text, or email — whichever is fastest.</p>	<p>2</p> <p>Get a Quote</p> <p>Within 24 hours we send a full custom quote with courses, lodging, and transport. Iterate as needed.</p>	<p>3</p> <p>Lock It In</p> <p>Confirm with a 10% deposit. We hold tee times and lodging. Final payment due 30 days before arrival.</p>	<p>4</p> <p>Show Up & Play</p> <p>You get a full itinerary email. Show it at check-in. We handle every detail behind the scenes.</p>
---	---	--	--

THE FINE PRINT

Booking terms in plain English

DEPOSIT	10% non-refundable, due at booking.
BALANCE	Due 30 days before arrival. Bookings inside 30 days are paid in full at booking.
BOOK BY	For peak season (Jan–April), book 6 to 12 months ahead.
PAYMENT	All major credit cards. ACH or wire available for large groups.
CANCEL	Flexible. Change dates, receive an e-voucher (valid 2 years), or refund minus deposit. Course and hotel windows vary.
WEATHER	Course-specific. Rain checks issued at the course's discretion.
RESORT FEES	Paid directly to the property at check-in. Not included in the package price.

TRIP DAY

Three things to know on arrival day

- 1 Plan for drive time.** Courses range from 15 to 60 minutes from lodging. Morning rush hour is real in Phoenix — build in a buffer for 8am tee times.
- 2 Arrive 30 minutes early.** Every course wants check-in and warm-up time. Starters are strict. Showing up hot puts the round behind.
- 3 Have confirmation numbers ready.** We email your full itinerary 7 days before arrival. Pull it up on your phone at check-in. Everything is already set, but the course and hotel staff need to match it.

ONCE YOU'RE HERE

We're a call or text away the entire trip. If weather shifts, a course closes, or the group decides to add an extra round at Grass Clippings on night two, we handle the change in real time.

START YOUR TRIP

Call, text, or email. We'll handle everything else.

Every trip is custom. No templates, no call center, no booking fees.

480-716-4994

azquote@golfpackagepros.com

@GolfScottsdaleArizona



@GolfScottsdaleArizona

480-716-4994

azquote@golfpackagepros.com

[@GolfScottsdaleArizona](#)
